



**Marbella
Grand**
EMBRACE THE LUXE!

THE CRÈME DE LA CRÈME OF LUXURY



CRÈME DE LA CRÈME *n.*

French [krem duh lah krem]

1. the best of the best, superlative, the very best, above all.

Example of crème de la crème in a sentence

Marbella Grand is the crème de la crème of Luxury.



OUR SYMBOL



Symbolizes the firm foundation needed to build a strong home. Since every element of the new home rests upon it, ensuring that the luxury haven has a solid foundation is key.

The Lion is a symbolism of elegance, strength and royalty. For this reason, it has been used as a logo, that communicates the company's values and ideas like no other. As an example of excellence in the real estate industry.

The luxurious and comfortable living is symbolised by the single pillar of strength which supports them. This is also the pillar on which Great Marbella Grand has been built upon!



Marbella Grand

EMBRACE THE LUXE!

Living and indulging in a luxurious life is what every individual desire nowadays. This is when the idea was born to come up with fine and stylish craftsmanship that magnificently defines luxury living. Located in the Heart of Punjab, Marbella Grand is an embodiment of stylish, urbane living that combines luxury, excellent design & superb engineering. A place which brings out the taste of fine living in true sense.



**Marbella
Grand**
EMBRACE THE LUXE!

LUXURY, AN ADDRESS YOU CAN OWN

Discover new address for unrivalled luxury with everything anyone can ever dream of. Located at the heart of Punjab, Mohali, Marbella Grand adds a distinguished charm to the bustling city offering luxurious spaces that oozes elegance from every nook and corner. Ideally located and just 5-minutes away from International Airport, reach ultimate haven in no time and embrace the luxe life!









THE QUINTESSENCE OF
EXTRAVAGANT LIVING





**“LUXURY IS ATTENTION TO DETAIL,
ORIGINALITY, EXCLUSIVITY AND
ABOVE ALL, QUALITY.”**

Angelo Bonati, CEO of Panerai

Nestled amidst picturesque surroundings, Marbella Grand is a meticulously crafted project by SRG Group offering a harmonious blend of architectural panache and exclusivity. The design aims to provide comfort and luxury with absolutely no compromise on quality. Each unit offers luxurious spaces that are personalized and unique. The elegant space speaks for itself filled with grandeur, splendour & charm. It is simply a perfect confluence of world-class lifestyle and contemporary living.







SKY WALK
ON THE 13TH
FLOOR

MAGNIFICENT
ARCHITECTURAL
MARVEL



STEP INTO THE WORLD OF SHEER OPULENCE

Marbella Grand is an epitome of stylish urbane living comprising of 668 ultra-luxury apartments - all meticulously planned and perfect conglomeration of fitness centres, spas, banquets and much more. Dwell in comfort and seep into a serene atmosphere without compromising on the finest amenities and splendid views.









ELDERS ZONE

For senior citizens to live their golden years in the best possible way by relaxing, taking a stroll or enjoying candid conversations amidst the serene environment.

▲ Located on the 13th Floor Skywalk







DIVINE PERGOLA

Take a stroll along the lovely shaded walkway with a tunnel-like feature that will make evening walks even more mesmerising.

▲ Trellis Garden





Marbella
Grand
GRAND HOTEL

Marbella
Grand
GRAND HOTEL



GYMNASIUM

State of the art gymnasium which encompasses the latest equipment so that everyone enjoys an active life & attains fitness goal in no time.

▲ Located on the Earth club







MOVIE SCREEN

What sets Marbella Grand apart from the rest is that it includes a luxurious 10-seat movie screening space equipped with surround sound and a 4K projector.

▲ Located on the 13th Floor Skywalk







JOGGING TRACK

Kickstart morning with a boost of energy on a jogging track surrounded by landscape gardens and aromatic flowerbeds.

▲ 1km. Jogging track



DISCOVER A MELANGE OF WORLD-CLASS AMENITIES

- 5-TIER SECURITY
- OLYMPIC SIZED SWIMMING POOL
- MINI CINEPLEX, LIBRARY & CAFETERIA
- OPEN AIR AMPHITHEATRE
- ART & CRAFT STUDIO FOR KIDS

OUTDOOR AMENITIES

- Golf Putting - 6 Hole
- Open Air Amphitheatre
- Olympic Sized Swimming Pool of 15,000 Sq.Ft. (Adam, Eve & kids Pool)
- Ornamentally Designed & Landscaped Gardens Spread across 8 Acres
- Divine Pergola
- Basketball
- Lawn Tennis Court
- 1 km Cycling & Jogging Track (Approx.)
- Badminton Court
- Cricket Net
- Water Bodies
- Barbeque area
- Kids play area with slides, swings and Sand-pit area

INDOOR AMENITIES

- Squash Court
- Billiards Room
- Carrom
- Chess
- Play Cards
- Table Tennis

- Gym & Spa
- Dance & Music Zone.

EARTH CLUB AMENITIES

- Reception & Concierge
- Art & Craft Studio for Kids
- Chemist shop & First Aid room
- Restaurant & Bar
- Yoga & Meditation room
- Earth Banquet
- Jacuzzi
- Mini Cineplex
- Library
- Salon & Spa
- Guest Suites
- Cafeteria
- Steam & Sauna Bath
- Conference Room

SKY CLUB AMENITIES

- Reception & Concierge
- Sky Deck meditation Area
- Sky Track - 800 Meters
- Open Air Gym
- Spa

- Open Air Meeting Zone
- Restaurant, Cafeteria & Juice Bar
- Senior Citizen Zone
- Open Air Mini Cineplex
- Open Air Games Area: Billiard, Chess, Carrom, Play Cards etc.
- Sky Banquet
- Worship Zone
- Water Bodies

OTHER FACILITIES

- Super Market-15,000 Sq.Ft.
- 5 - Tier Security
- Electric Golf Carts
- Car Washing Area
- Cycle Stand
- Worship Zone
- On Call Housekeeping
- Pet's Zone
- Driver's Dormitory
- Round the Clock Water and Electricity
- Ample Open Parking for visitors & covered for residents
- Creche
- 24 Hour Medical Emergency Vehicle
- Panic Button in all Apartments

SAMPLE FLATS

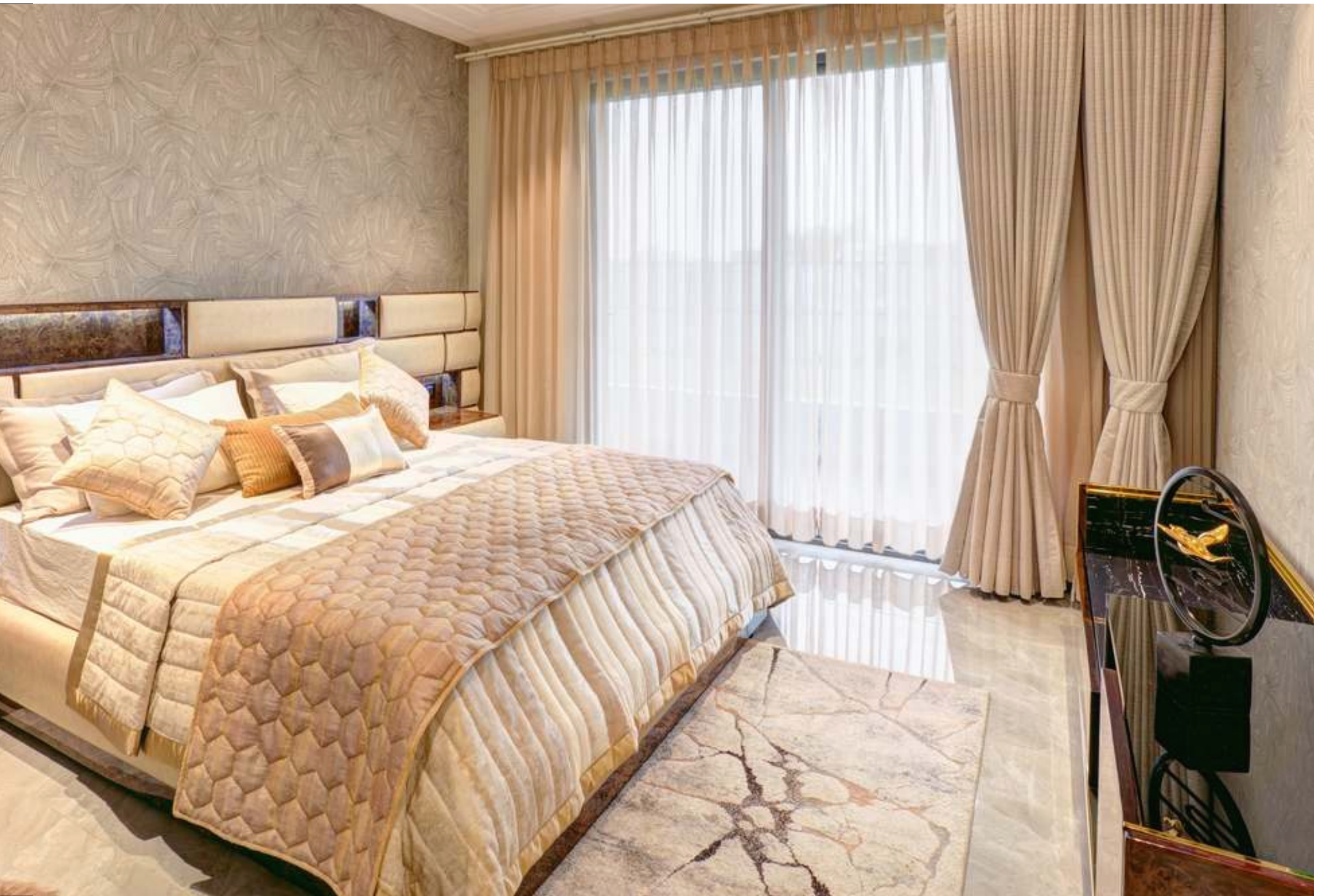
Well-designed, captivating and welcoming - all this defines the sublime and avant-garde sample flats of Marbella Grand. Every unit has been curated with utmost care and the best-in-class products for a fine living experience. With vernacular architectural design & peaceful environment, Marbella Grand instantly transforms mundane lifestyle into something magical.



AESTHETICALLY PLEASING BEDROOM

Intricate designs with soft hues and bright accents of minimalism that instantly sets the tone for the whole space. Gives a true feeling of sleeping in the lap of luxury.





STUNNING DRAWING ROOM

Emits a serene softness with bespoke artwork and furnishings adding depth and richness to the interior. A perfect venue for private afternoon teas or intimate functions.





LAVISH DINING AREA

Brilliant craftsmanship filled with an air of exquisite elegance that adds to the grandiose and takes the remarkable drawing area to a whole new level.





CONTEMPORARY & MODULAR KITCHEN

A perfect melange of great design and elegant finish that has been exquisitely crafted to add a contemporary and stylish touch to the home.





ELEGANT AND RELAXING BATHROOM

A minimalistic, sophisticated look and feel bathroom to suit every personal style that easily transforms utilitarian spaces into relaxing and refreshing escapes.





SPECIFICATIONS

Throughout urban styled 3/4/5 BHK apartments, striking contemporary finishes have been chosen with care and executed with perfection. Just some things that guarantee fine living at Marbella Grand.

GRAND STRUCTURE

23 Storied, Earthquake resistant Mivan Formwork (Malaysian Technology), RCC framed structure, Bricks only where needed.

EXTERNAL FINISH

Textured paint on exterior sections and glass on specific sections.

GRAND ENTRANCE LOBBY- GROUND FLOOR

Grand Air-conditioned Lobby with star category finishes & amenities Like Concierge, Meeting & Waiting Lounges, Rest Rooms, etc. Appropriate Mix of Marble / Granite Flooring, Premium emulsion paint on Walls and Ceiling.

GRAND BALCONIES

Upto 12 Ft. Wide Grand Balconies Brick wall along with Wet Point & provision for washing machine, cloth dryer & dishwasher in Service Balcony Flooring-Anti skid Vitrified Tiles Wall & Ceiling Finishes-Weather proof external paint Handrail-Toughened Glass with Stainless Steel Railing.

ELECTRICAL FITTINGS

All electrical wiring in concealed conduits, provision of adequate light and power points. Telephone, Internet, Intercom, DTH / Cable and TV outlets in Drawing, Dining and all Bedrooms, Moulded Modular Plastic Switches & Protective MCB's

LIVING / DINING / FAMILY LOUNGE

Flooring Premium / Vitrified Tiles / Italian Nexion / Sempolo or Equivalent. Walls-Premium Emulsion Paint Ceiling-Premium Emulsion Paint & False Ceiling with ambient lighting & Fans, All Weather Centralized Air Conditioning with VRV System in all Bedrooms, Living Rooms and Utility Room. Daikin / Mitsubishi or Equivalent, Panic Button in all apartments

BEDROOM (S) FINISHES WARDROBES

Full Height. Wall-to-Wall Modular wardrobes with Lacquered Glass on Top in All Bedrooms & Selected Washrooms.

FLOORING

Laminated wooden flooring in Master Bedroom (Brand - Pergo or equivalent) & Premium / Vitrified tiles (Nexion/Simpolo or equivalent) in all other Bedrooms.

GRAND ELEVATORS

'One' Service Elevator (6ft. X9Ft.) And 'Three' Passenger Elevators (6ft. X 9ft.) by Mitsubishi / Kone or equivalent brand in each tower.

KITCHEN CABINETS

Premium Modular Kitchen cabinets of Appropriate Finishes (Hettich) with Branded RO / Chimney / Hob / Geyser. Flooring-Anti skid Vitrified tiles (Nexion / Sempolo or equivalent) Dado-Premium Vitrified tiles upto 2ft. above counter Wall Finishes-Vitrified Tiles / Premium Emulsion Paint Ceiling-Premium Emulsion Paint, Illuminated False Ceiling. Counter Premium Quartz. Equipment: Built-in Microwave and OTG, Refrigerator, Dishwasher

WASHROOMS

Fully featured washrooms with branded CP & Sanitary fittings (Toto / Grohe / Kohler or equivalent) Also includes Shower, Vanity, Looking Mirror, One Geyser each, Glass Shower partition, False ceiling with ambient lighting / Mosaic tiles & Exhaust fans, etc. Flooring equivalent.

OTHERS

Fire Sprinklers according to NBC & LPG Gas Line Fitting. Total 6 Fans in 3BHK + Utility (Platinum) and 9 Fans in 4 BHK Utility Store Puja (Titanium) - Havels / Orient or Equivalent

WALL FINISHES

Premium Emulsion Paint Ceiling Premium Emulsion Paint & False ceiling with ambient lighting

AIR CONDITIONING SYSTEM

All Weather Centralized Air Conditioning with VRV system in all Bedrooms, Living Rooms and Utility Room. Daikin / Mitsubishi or Equivalent.

GRAND STAIRCASES

6 Ft. wide Grand Staircases Risers & Treads-Granite Stone Wall & Ceiling Finishes - Premium Emulsion Paint Handrail and Stainless-Steel Railing

GRAND DOORS & WINDOWS

Upto 8 Ft. Wide & 8 Ft. High Doors Flush Door & Frame with Teakwood veneer. Key Less Entry with Yale / Godrej or Equivalent Door Lock, Honeywell or Equivalent Video door phone. Upto 8Ft. High Windows High-Grade Aluminium with AIS or Equivalent Toughened Glass & Mesh Doors

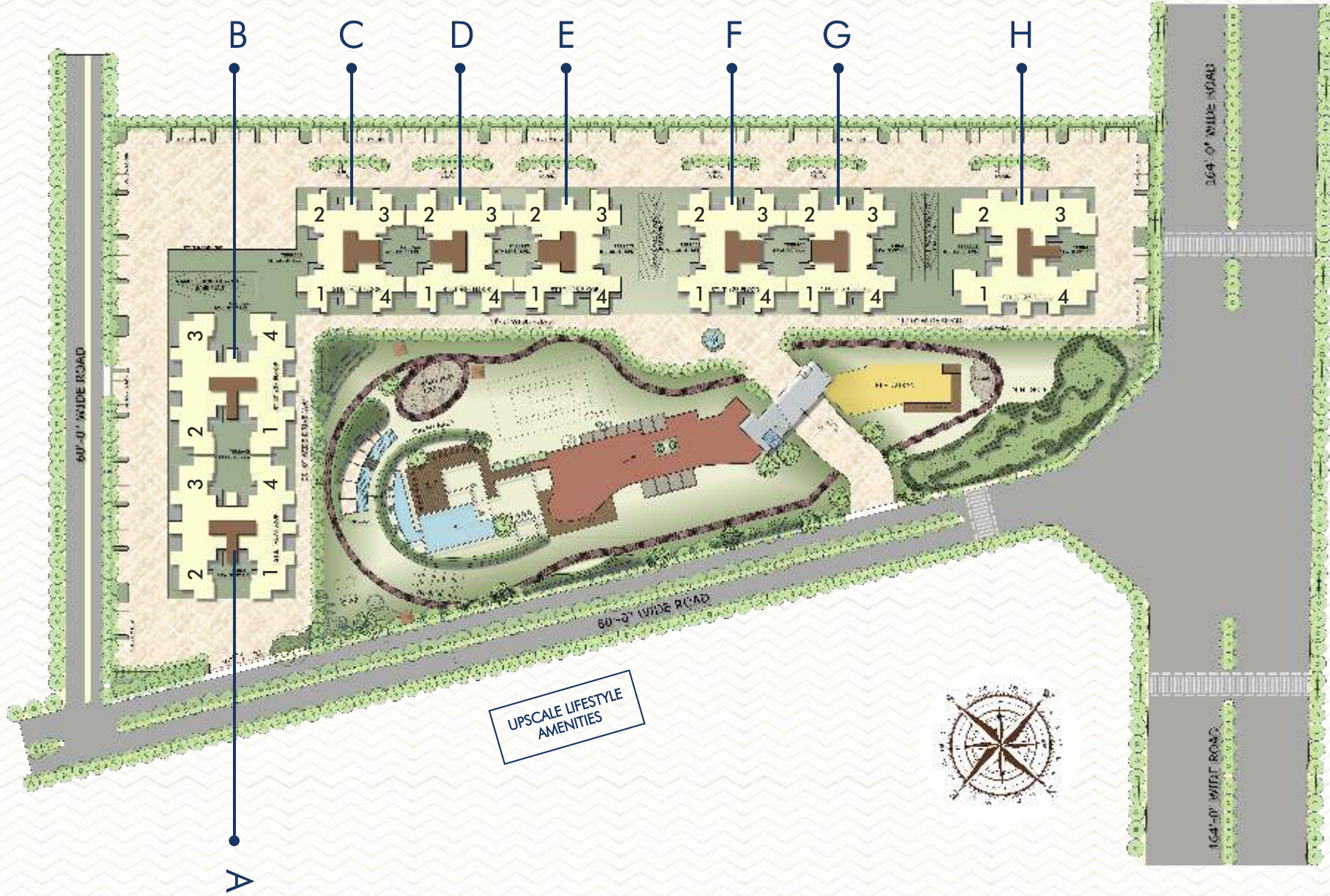
WALLS

Premium Vitrified Tiles -Upto Full Height. or & Frame with ei or Equivalent or phone. Upto Premium Anti-Skid Vitrified Tiles (Nexion/Simpolo or Equivalent)



MASTER PLAN





UPSCALE LIFESTYLE AMENITIES



SITE PLAN

3+1BHK INDEPENDENT FLOOR PLAN

TYPICAL FLOOR PLAN (PLATINUM)

3+1BHK + UTILITY + STORE/PUJA ROOM

Super Area - 2580 sq.ft.
 Covered Area - 2175 sq.ft.
 Carpet Area - 1700 sq.ft.

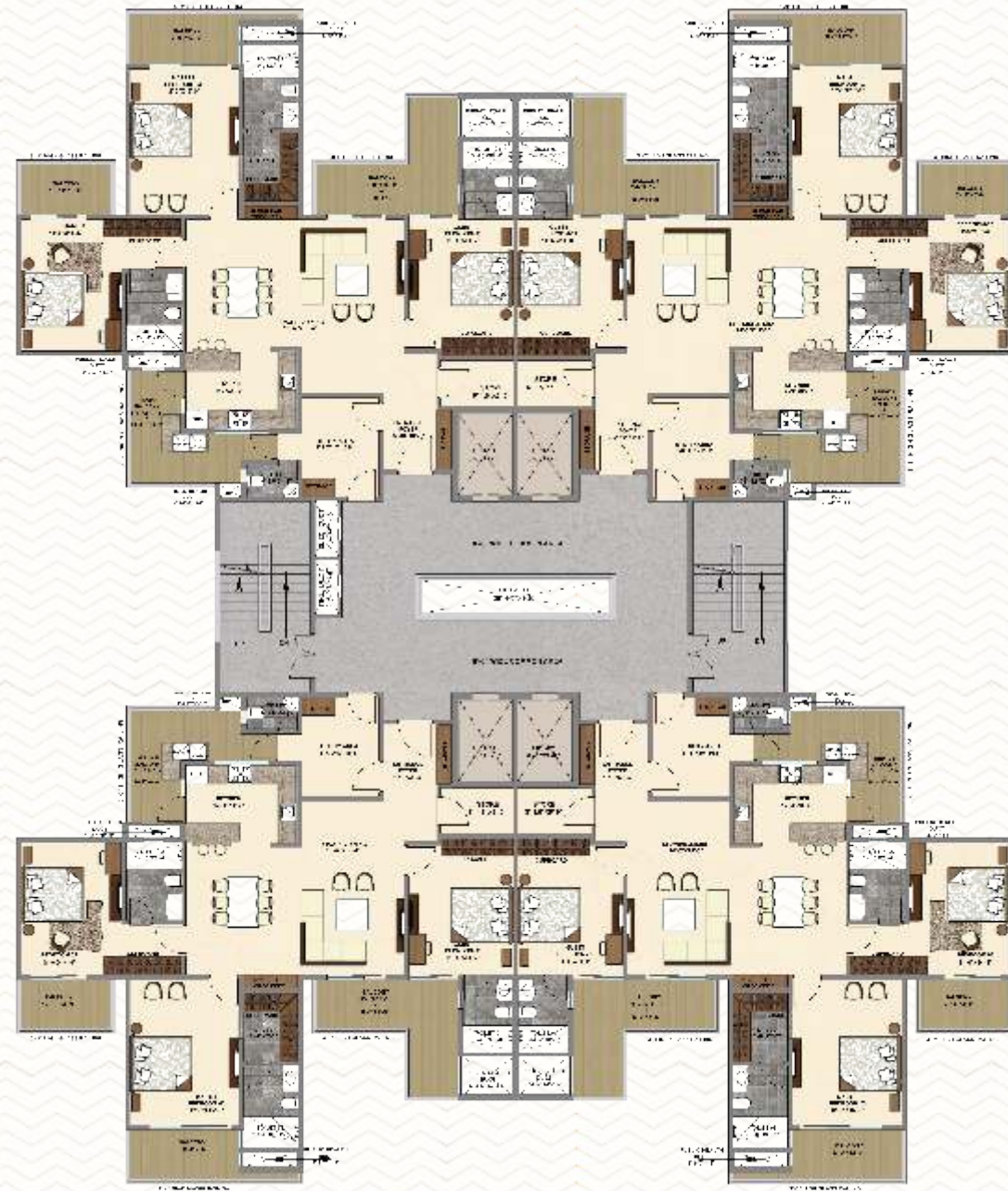


3+1 BHK CLUSTER FLOOR PLAN

TYPICAL FLOOR PLAN (PLATINUM)

3+1 BHK + UTILITY + STORE/PUJA ROOM

Super Area - 2580 sq.ft.
Covered Area - 2175 sq.ft.
Carpet Area - 1700 sq.ft.



4+1 BHK INDEPENDENT FLOOR PLAN

TYPICAL FLOOR PLAN (TITANIUM)

4+1 BHK + UTILITY + STORE + PUJA ROOM

Super Area - 3560 sq.ft.
 Covered Area - 3130 sq.ft.
 Carpet Area - 2460 sq.ft.



4+1BHK CLUSTER FLOOR PLAN

TYPICAL FLOOR PLAN (TITANIUM)

4+1BHK + UTILITY + STORE + PUJA ROOM

- Super Area - 3560 sq.ft.
 - Covered Area - 3130 sq.ft.
 - Carpet Area - 2460 sq.ft.
-



3+1BHK PENTHOUSE LOWER FLOOR

TYPICAL FLOOR PLAN (PLATINUM)

3+1 BHK + UTILITY + STORE/PUJA ROOM

Super Area	-	2538.45 sq.ft.
Covered Area	-	1870.44 sq.ft.
Carpet Area	-	1623.09 sq.ft.



3+1 BHK PENTHOUSE UPPER FLOOR

TYPICAL FLOOR PLAN (PLATINUM)

3+1 BHK + UTILITY + STORE/PUJA ROOM

Super Area	-	2283.67 sq.ft.
Covered Area	-	2080.23 sq.ft.
Carpet Area	-	1519.43 sq.ft.



3+1 BHK PENTHOUSE TERRACE

TYPICAL FLOOR PLAN (PLATINUM)

3+1 BHK + UTILITY + STORE/PUJA ROOM

Super Area - 2235.77 sq.ft.
 Covered Area - 893.83 sq.ft.
 Carpet Area - 721.50 sq.ft.



4+1 BHK PENTHOUSE LOWER FLOOR

TYPICAL FLOOR PLAN (TITANIUM)

4+1 BHK + UTILITY + STORE + PUJA ROOM

Super Area	-	3640.94 sq.ft.
Covered Area	-	2672.24 sq.ft.
Carpet Area	-	2290.34 sq.ft.



4+1 BHK PENTHOUSE UPPER FLOOR

TYPICAL FLOOR PLAN (TITANIUM)

4+1 BHK + UTILITY + STORE + PUJA ROOM

- Super Area - 2995.27 sq.ft.
- Covered Area - 2787.31 sq.ft.
- Carpet Area - 1745.36 sq.ft.



4+1 BHK PENTHOUSE TERRACE

TYPICAL FLOOR PLAN (TITANIUM)

4+1 BHK + UTILITY + STORE + PUJA ROOM

Super Area - 2787.20 sq.ft.
 Covered Area - 1055.83 sq.ft.
 Carpet Area - 874.35 sq.ft.





THE BUILDERS BEHIND THE EXTRAVAGANT LIVING

With over two decades of extensive experience, SRG Group is the pioneer in Real Estate Market redefining luxurious lifestyle in true sense. The innovative & visionary group of real estate professionals, industrialists and thinkers brought out together a unique architectural design that reflects urban sophistication & modern luxury from every nook & corner.



A Project By



SRG GROUP

Marbella Grand Site Office: GHS NO. 3 IT CITY, SECTOR 82 ALPHA,
MOHALI (Punjab), India - 160055
Email: info@marbellagrand.com

www.marbellagrand.com

Disclaimer: This brochure is purely conceptual and do not constitute a legally binding offer. All images are artist's impressions and not necessarily fully representative. In the interest of maintaining high standards, the contents herein, including all services, infrastructure, products, designs, amenities, facilities, site plans, layout plans, floor plans, areas, dimension, specifications, elevations, and perspectives views are tentative in nature and are subject to variations and modifications, without notice, till the final completion of the project, at the sole discretion of Competent, Statutory Authorities or the Company. Architectural features may differ in different apartments. Soft Furniture, furniture, and gadgets are not part of the offering. All images are an artistic conceptualization and does not purport to replicate the exact products. Marbella Grand is a government approved group housing project.

— Follow us —

